

智联城市，布局全球战略

Global strategy

产品和服务网络覆盖
东南亚、中东、非洲等国家和地区

50+



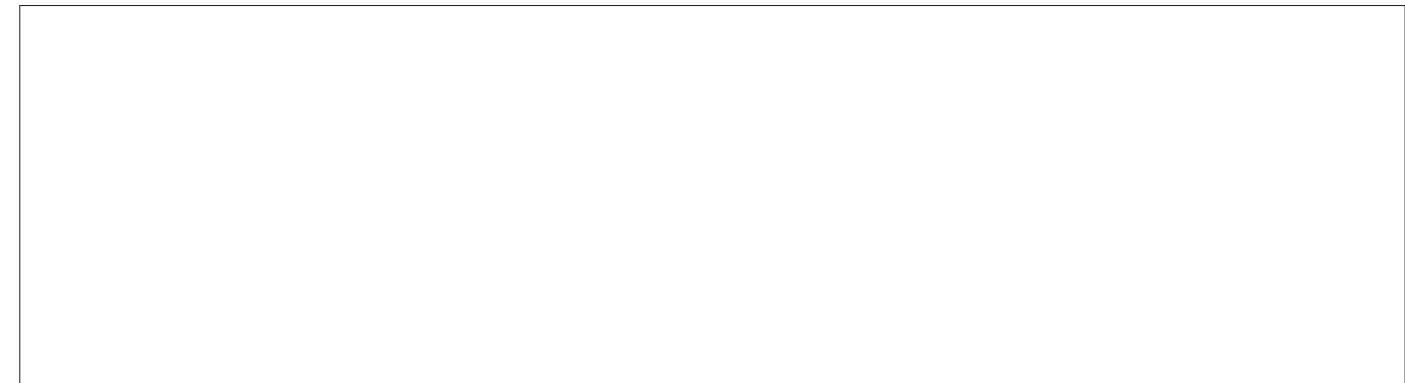
JOYLIFE

智能乘客电梯

全生命周期管理服务方案

Lifecycle management service plan for
Intelligent Passenger Elevator

3100/3200/3600



巨立电梯股份有限公司 (证券简称: 巨立股份 证券代码: 833481) Joylive Elevator Co., Ltd.

总部: 江苏省昆山市正仪君子亭西路615号 | 智能工厂: 江苏省昆山市石牌毛许路322号 | www.joylive.com
电话: 0512-57806555 | 传真: 0512-57899222 | 全国24小时服务热线: 400 884 8881 | 电子邮箱: joylive@joylive.com
A: No. 615, West Junziting Rd., Kunshan Suzhou City, China | T: +86-512-57806555 | M: sales@joylive.com

本印刷品仅作为一般信息之用, 本公司保留随时更改产品设计与规格的权利。本印刷品所载信息就产品及其特殊用途之适用性、适用性、品质均不构成任何明示或暗示的担保或承诺, 亦不得作为其中产品或服务采购协议的条款, 内容仅供参考, 如有变动, 以最新技术文件为准, 恕不另行通知, 印刷颜色与实际色彩可能略有差别, 以实物为准。
Photos and information of products in the catalog are for your reference only and they may not reflect the actual products. Joylive has rights to change products design and specification without prior notice.

版权所有 201907



巨立电梯官方微信



巨立电梯官方网站

巨立股份 伴你美好生活

JOYLIFE - Your friend of wonderful life



Joylife 商务住宅电梯方案

Commercial & Residential Passenger Elevator

- 满足全球商务住宅市场配套
- 覆盖刚需商务居所市场
- 提供建筑辅助设计
- 户型与客流规划
- 促进建筑增值

To meet the competitive global market of the residential as well as the commercial buildings, and to provide a highly standardized solution for passenger flow planning, pre-engineered components and interior designs provide straight forward options for customers.

ELEVATOR IoT PLATFORM 电梯物联网服务平台

为电梯运行提供数字化服务
Providing digital services for elevator running



动态检测

Dynamic Diagnosis



对电梯的关键部件实施动态检测, 当异常或接近使用寿命时, 自动预警, 通过预测性维保消除故障隐患。
By dynamic monitoring of key components, upon detection of any abnormal or near the end of service-life component, early warning will be issued for elimination of the potential risk.

远程监控

Remote monitoring



远程数据采集、监测、管理, 高效管控即时信息。
Remote data collection, monitoring, efficient management and control of real-time information.

在线安装

Online installation



从电梯出厂到交付使用, 安装过程全监控。
From manufacturing of the elevator to its delivery and client's use, the whole installation process is fully monitored.

在线维保

Online Maintenance



自动生成电梯专属健康档案和维保诊断报告, 预设保养时间, 实时监控、反馈维修保养进度。
Including automatically generated elevator's specific well functioning records and maintenance diagnostic reports, preset maintenance time, real-time monitoring, maintenance feedback and maintenance progress.

网格救援

On-the-grid Rescue



电梯故障时主动提示并进行网络精准定位, 监控中心主动派遣专业技术工程师赶赴维修处理。
When one unpredicted failure occurs, network positioning system will be instantly prompted, and then, the monitoring center actively dispatches professional engineers to perform the repair.

体验互动

Interactive system



巨立云 4.0, 提供更多创新型数字化服务, 融入丰富的智能手机与电梯语音、视频等多媒体互动体验。
Joycloud 4.0 provides even more innovative and digital services to elevator and includes the experience of multimedia interaction between smart phone and elevator.

* 选配功能
Optional function

扫描二维码

下载巨立云手机客户端

Scan the QR code to download the JoyCloud App



Joycloud Android



Joycloud ios

创新技术 安全保障

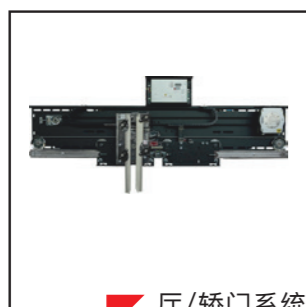


智能控制系统

智能一体化控制驱动器，精确控制位置信息，电梯平层更加安全准确、平稳，有效提高运行效率和舒适度。

INTELLIGENT CONTROL SYSTEM

By the aid of intelligent control drive and precise acquisition of positioning data, elevator leveling is performed in a more stable and accurate fashion, which, in turn, effectively improves the operational safety and comfort.



厅/轿门系统

永磁电机，效率高，转动力矩大，低耗节能；调速舒适感强，实现力矩、位置、速度的全闭环控制

DOOR MECHANISM

The door mechanism is driven by permanent magnet motor with high efficiency, sizable turning torque and low energy consumption, which has a robust speed, torque, positioning and closed loop control.

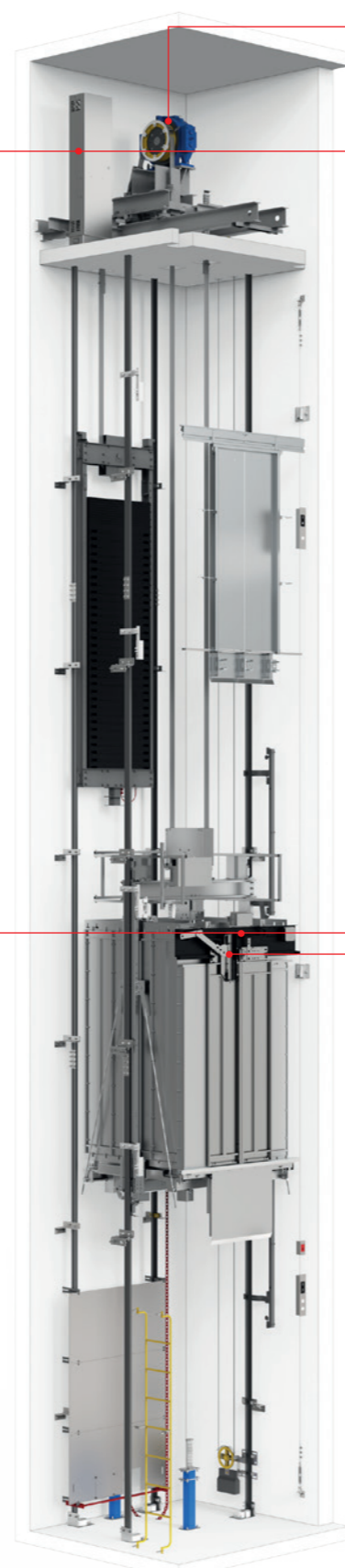


减震降噪系统

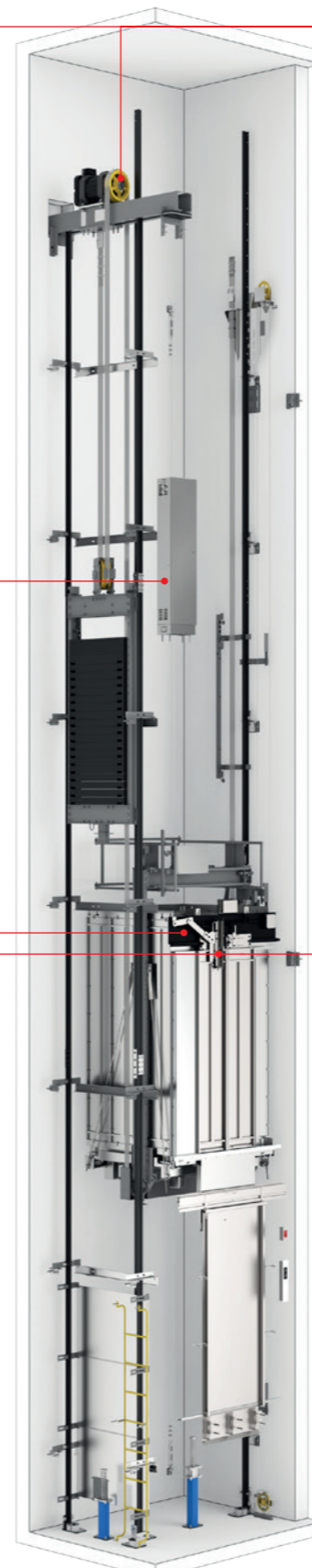
多重减震措施，减弱震动传导，配置隔音、降噪措施，增强乘坐舒适度，提高用户体验。

SHOCK ABSORPTION AND NOISE REDUCTION SYSTEM

Along with multiple shock absorption measures for reduction of vibration transmission, sound insulation and other noise reduction methods are applied for enhanced and comfortable user experience.



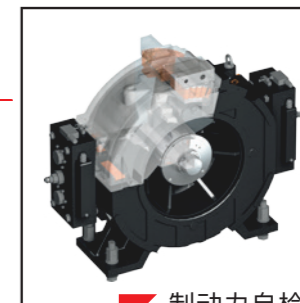
3100/3600



3200

SELF-DETECTION OF TRACTION MOTOR'S BRAKE FORCE

Regular and timely detection of braking capacity of traction motor by self-diagnostic feature of the traction motor itself prevents any potential failure or safety problem in this regard.

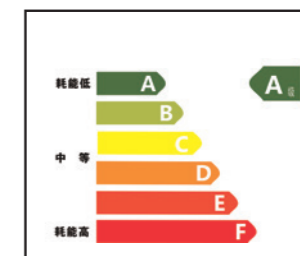


制动力自检测

定时检测主机制动能力，验证其可靠性，避免因抱闸失效而导致的电梯安全问题，实现电梯健康安全自诊断。

ISO25745 CLASS-A, HIGHEST ENERGY SAVING CERTIFICATE

Standby power consumption is less than 50W, which reduces the standby power consumption by 50%.

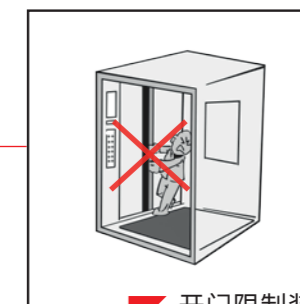


通过ISO25745 最高A级节能认证

待机功耗低于50W，呼梯响应迅速，减少50%的待机电耗。

ANTI-PUSH DOOR OPENING DEVICE

Active door lock to prevent safety problems such as door slamming or forcible opening.



开门限制装置

主动将轿门锁紧，避免强行扒门等安全问题。

MODULAR ASSEMBLY

Pre-engineered components for the modular assembly system, as well as strict quality control brings about higher quality and efficiency of the final installation of units



模块化组装

最大模块化组装出厂，严格质量检验，极大提高现场安装质量与效率。



轿厢 G5281 (标配) Standard Cabin



吊顶 G1089 (标配) Ceiling



烤漆RAL7038 Painted 烤漆RAL9001 Painted



发纹不锈钢 Hairline St./St.



侧壁/后边壁 Car wall



发纹不锈钢 Hairline St./St.



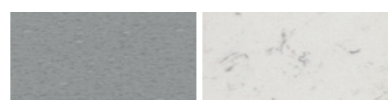
后中壁 Car wall



发纹不锈钢 Hairline St./St. 镜面不锈钢 Mirror St./St.



地板 Floor



PVC G3121 PVC G3122



橡胶 G3123



360° 全景

备注:

本手册所展示的轿厢及选项配置仅供参考, 所示样品与实物的色彩和材质可能会有偏差, 以实物为准。

Note:

The color and material shown in this manual are for reference only. The color and material of these sample might be different from the real object.



轿厢 G5280 (选配) Optional Cabin



吊顶 G1090 Ceiling



烤漆RAL7038 Painted 烤漆RAL9001 Painted



发纹不锈钢 Hairline St./St.



侧壁/后边壁 Car wall



发纹不锈钢 Hairline St./St.



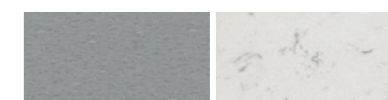
后中壁 Car wall



发纹不锈钢 Hairline St./St. 镜面不锈钢 Mirror St./St.



地板 Floor



PVC G3121 PVC G3122



橡胶 G3123



360° 全景

备注:

本手册所展示的轿厢及选项配置仅供参考, 所示样品与实物的色彩和材质可能会有偏差, 以实物为准。

Note:

The color and material shown in this manual are for reference only. The color and material of these sample might be different from the real object.



轿厢 G5282 (选配) Optional Cabin



360° 全景



吊顶 G1089 Ceiling



烤漆RAL9001 Painted 烤漆RAL7038 Painted



发纹不锈钢 Hairline St./St.



侧壁/后边壁 Car wall



G4445 G4441



G4450 G4446



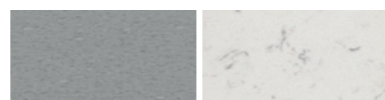
后中壁 Car wall



镜面不锈钢 Mirror St./St.



地板 Floor



PVC G3121 PVC G3122



橡胶 G3123

备注:

本手册所展示的轿厢及选项配置仅供参考, 所示样品与实物的色彩和材质可能会有偏差, 以实物为准。

Note:

The color and material shown in this manual are for reference only. The color and material of these sample might be different from the real object.



轿厢 G5288 (选配) Optional Cabin



360° 全景



吊顶 G1090 Ceiling



烤漆RAL9001 Painted 烤漆RAL7038 Painted



发纹不锈钢 Hairline St./St.



侧壁/后边壁 Car wall



G4441 G4445



G4450 G4446



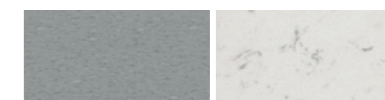
后中壁 Car wall



镜面不锈钢 Mirror St./St.



地板 Floor



PVC G3121 PVC G3122



橡胶 G3123

备注:

The color and material shown in this manual are for reference only. The color and material of these sample might be different from the real object.



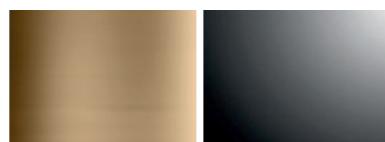
轿厢 G5278 (选配) Optional Cabin



前壁/轿门 Car wall



镜面不锈钢
Mirror St./St. 钛金色
Titanium



玫瑰金色
Rose gold 黑钛金色
Black Titanium



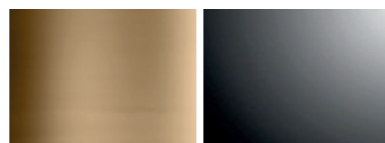
侧/后边壁 Car wall



发纹不锈钢
Hairline St./St. 镜面不锈钢
Mirror St./St.



钛金色
Titanium 磨砂不锈钢
Frosted St./St.



玫瑰金色
Rose gold 黑钛金色
Black Titanium



360° 全景

备注:

本手册所展示的轿厢及选项配置仅供参考, 所示样品与实物的色彩和材质可能会有偏差, 以实物为准。

Note:

The color and material shown in this manual are for reference only. The color and material of these sample might be different from the real object.



侧中壁 Car wall



镜面不锈钢
Mirror St./St.



发纹不锈钢
Hairline St./St.



磨砂不锈钢
Frosted St./St.



吊顶 G1008 Ceiling



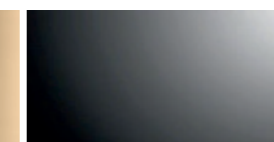
镜面不锈钢
Mirror St./St.



钛金色
Titanium



玫瑰金色
Rose gold



黑钛金色
Black Titanium



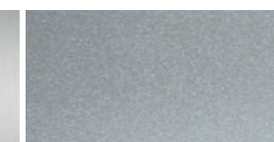
后中壁 Car wall



镜面不锈钢
Mirror St./St.



发纹不锈钢
Hairline St./St.



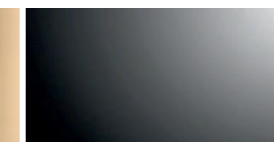
磨砂不锈钢
Frosted St./St.



钛金色
Titanium



玫瑰金色
Rose gold



黑钛金色
Black Titanium



G4207



G4211



G4212



G4213



地板 Floor



大理石 G3313
Marble



拼花大理石 G3361
Marble



拼花大理石 G3362
Marble



轿厢 G5279 (选配) Optional Cabin



前壁/轿门 Car wall



镜面不锈钢
Mirror St./St. 钛金色
Titanium



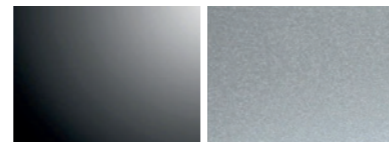
玫瑰金色
Rose gold 黑钛金色
Black Titanium



侧/后边壁 Car wall



发纹不锈钢
Hairline St./St. 镜面不锈钢
Mirror St./St.



黑钛金色
Black Titanium 磨砂不锈钢
Frosted St./St.



钛金色
Titanium 玫瑰金色
Rose gold



360° 全景

备注:

本手册所展示的轿厢及选项配置仅供参考, 所示样品与实物的色彩和材质可能会有偏差, 以实物为准。

Note:

The color and material shown in this manual are for reference only. The color and material of these sample might be different from the real object.



后中壁 Car wall



镜面不锈钢
Mirror St./St. 发纹不锈钢
Hairline St./St. 磨砂不锈钢
Frosted St./St. 镜面不锈钢
Mirror St./St.



黑钛金色
Black Titanium 钛金色
Titanium 玫瑰金色
Rose gold



侧中壁 Car wall



镜面不锈钢
Mirror St./St. 发纹不锈钢
Hairline St./St. 磨砂不锈钢
Frosted St./St.



黑钛金色
Black Titanium 钛金色
Titanium 玫瑰金色
Rose gold



G4213 G4211 G4212 G4207



地板 Floor



大理石 G3313
Marble 拼花大理石 G3361
Marble 拼花大理石 G3362
Marble



吊顶 G1010 Ceiling



镜面不锈钢
Mirror St./St.



轿厢 G5290 (选配) Optional Cabin



前壁/轿门 Car wall



镜面不锈钢 Mirror St./St. 钛金色 Titanium



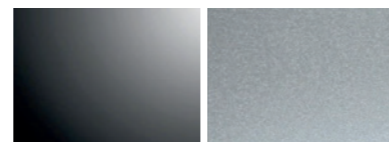
玫瑰金色 Rose gold 黑钛金色 Black Titanium



侧/后边壁 Car wall



发纹不锈钢 Hairline St./St. 镜面不锈钢 Mirror St./St.



黑钛金色 Black Titanium 磨砂不锈钢 Frosted St./St.



钛金色 Titanium 玫瑰金色 Rose gold



360° 全景



吊顶 G1010 Ceiling



镜面不锈钢 Mirror St./St.



后观光壁 Car wall



夹胶玻璃 Glass



侧中壁 Car wall



镜面不锈钢 Mirror St./St. 发纹不锈钢 Hairline St./St. 磨砂不锈钢 Frosted St./St.



黑钛金色 Black Titanium 钛金色 Titanium 玫瑰金色 Rose gold



G4213 G4211 G4212 G4207



地板 Floor



大理石 G3313 Marble 拼花大理石 G3361 Marble 拼花大理石 G3362 Marble

备注:

本手册所展示的轿厢及选项配置仅供参考, 所示样品与实物的色彩和材质可能会有偏差, 以实物为准。

Note:

The color and material shown in this manual are for reference only. The color and material of these sample might be different from the real object.



轿厢 G5283 (选配) Optional Cabin



吊顶 G1091 Ceiling



发纹不锈钢 Hairline St./St. 镜面不锈钢 Mirror St./St.



前壁/轿门 Car wall



镜面不锈钢 Mirror St./St. 钛金色 Titanium



玫瑰金色 Rose gold 黑钛金色 Black Titanium



侧/后边壁 Car wall



镜面不锈钢 Mirror St./St. 发纹不锈钢 Hairline St./St. 磨砂不锈钢 Frosted St./St.



钛金色 Titanium 玫瑰金色 Rose gold 黑钛金色 Black Titanium



侧中壁 Car wall



贝壳饰面 Shells



后中壁 Car wall



红橡木饰面 Wood



地板 Floor



拼花大理石 G3361 Marble 拼花大理石 G3363 Marble 拼花大理石 G3362 Marble



360° 全景

备注:

本手册所展示的轿厢及选项配置仅供参考, 所示样品与实物的色彩和材质可能会有偏差, 以实物为准。

Note:

The color and material shown in this manual are for reference only. The color and material of these sample might be different from the real object.



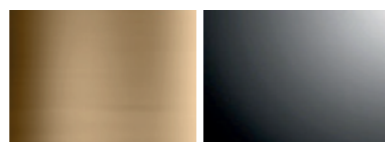
轿厢 G5284 (选配) Optional Cabin



前壁/轿门 Car wall



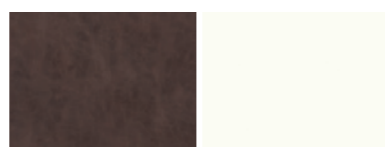
镜面不锈钢 Mirror St./St. 钛金色 Titanium



玫瑰金色 Rose gold 黑钛金色 Black Titanium



后壁 Car wall



G4450 G4441



G4445 G4446



360° 全景



吊顶 G1095 Ceiling



发纹不锈钢 Hairline St./St.



装饰条 Car wall



镜面不锈钢 Mirror St./St.



侧壁 Car wall



磨砂不锈钢 Frosted St./St. 镜面不锈钢 Mirror St./St. 发纹不锈钢 Hairline St./St.



钛金色 Titanium 玫瑰金色 Rose gold 黑钛金色 Black Titanium



地板 Floor



大理石 G3313 Marble 拼花大理石 G3361 Marble 拼花大理石 G3362 Marble

备注:

本手册所展示的轿厢及选项配置仅供参考, 所示样品与实物的色彩和材质可能会有偏差, 以实物为准。

Note:

The color and material shown in this manual are for reference only. The color and material of these sample might be different from the real object.



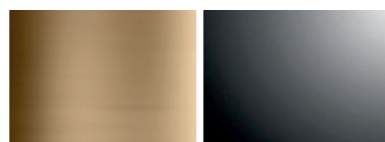
轿厢 G5286 (选配) Optional Cabin



前壁/轿门 Car wall



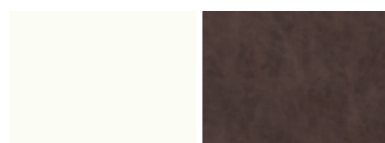
镜面不锈钢 Mirror St./St. 钛金色 Titanium



玫瑰金色 Rose gold 黑钛金色 Black Titanium



侧/后边壁 Car wall



G4441 G4450



G4445 G4446



360° 全景

备注:

本手册所展示的轿厢及选项配置仅供参考, 所示样品与实物的色彩和材质可能会有偏差, 以实物为准。

Note:

The color and material shown in this manual are for reference only. The color and material of these sample might be different from the real object.



侧/后中壁 Car wall



镜面不锈钢 Mirror St./St. 发纹不锈钢 Hairline St./St. 磨砂不锈钢 Frosted St./St.



钛金色 Titanium 玫瑰金色 Rose gold 黑钛金色 Black Titanium



G4207 G4211 G4212



G4213



吊顶 G1093 Ceiling



透光软膜 Soft membrane



地板 Floor



拼花大理石 G3363 Marble 拼花大理石 G3361 Marble 拼花大理石 G3362 Marble

标配操纵箱组合 COP & HOP



COP

G2113

标配，分体嵌入式面板，发纹不锈钢或镜面不锈钢，白色段码显示，可选橙色点阵显示。

Standard, split embedded panel, hairline St./St. & mirror St./St, white segment or orange dot matrix display.

HOP



G2251

标配，壁挂式面板，发纹不锈钢，白色段码显示。

Standard, wall-hanging panel, hairline St./St., white segment display.



G2209

选配，嵌入式面板，发纹不锈钢，白色段码显示，可选橙色点阵显示。

Optional, embedded panel, hairline St./St., white segment or orange dot matrix display.

说明：1、当操纵箱显示为橙色点阵时，对应外召唤只能选G2209橙色点阵显示。
2、当3300S、3300N、3100、3200、3600系列产品任意两种及以上出现在同一项目、同一场所时，人机界面配置必须统一。

Description: 1. when the control box is displayed as an orange dot matrix, only the G2209 orange dot matrix display can be selected for the external call.
2. when 3300S, 3300N, 3100, 3200, 3600 series of products any two or more at the same time, it is must be unified product configurations.

按钮 Buttons



G2404-M
(标配)
Standard

消防盒 Fire emergency box



G2271

壁挂式
Wall-hanging

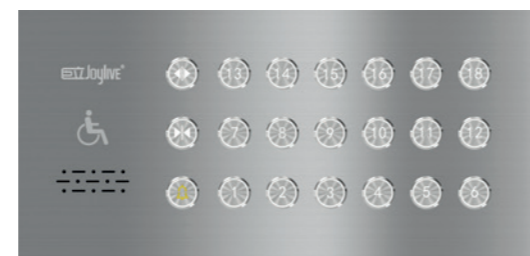


G2220

嵌入式
Embedded

说明：消防盒安装方式与选用外召盒相同。
Description: The fire box is installed in the same way as the call box.

残障操纵箱 Handicap control box



G2120

嵌入式 选配
Embedded Optional

选配操纵箱组合 COP & HOP



COP

G2116

选配，一体嵌入式，白色段码显示，可选橙色点阵横显和7寸真彩横显图片机。

面板材质：发纹不锈钢、镜面不锈钢和磨砂不锈钢

面板颜色：黑钛金、钛金、玫瑰金

Optional, one-piece embedded, white segment, optional orange dot matrix display and 7 inch multi-media LCD.

Panel material: hairline St./St., mirror St./St. and frosted St./St.

Panel color: black titanium, titanium and rose gold.

HOP



G2245

选配，壁挂式，磨砂抗指纹不锈钢，白色段码显示。

Optional, wall-hanging, frosted St./St., white segment.



G2209

选配，嵌入式，白色段码显示，可选橙色点阵显示。

面板材质：发纹不锈钢、镜面不锈钢和磨砂不锈钢。

面板颜色：黑钛金、钛金、玫瑰金。

Optional, embedded, frosted St./St., white segment or orange dot matrix display.

Panel material: hairline St./St., mirror St./St. and frosted St./St.
Panel color: black titanium, titanium and rose gold.

说明：1、当操纵箱显示为橙色点阵时，对应外召唤只能选G2209橙色点阵显示。
2、当3300S、3300N、3100、3200、3600系列产品任意两种及以上出现在同一项目、同一场所时，人机界面配置必须统一。

Description: 1. when the control box is displayed as an orange dot matrix, only the G2209 orange dot matrix display can be selected for the external call.
2. when 3300S, 3300N, 3100, 3200, 3600 series of products any two or more at the same time, it is must be unified product configurations.

COP

G2141

选配，分体嵌入式，黑色/白色玻璃触摸面板，7寸真彩横显图片机显示。

Optional, split embedded, black or white glass panel, 7 inch multi-media LCD.



HOP



G2243

选配，嵌入式
Optional, embedded

黑色/白色玻璃触摸面板，显示可选白色段码（黑色或蓝色背景）和真彩图片机。

Black or white glass panel, white segment or 7 inch multi-media LCD.



G2327

嵌入式
Embedded



G2328

壁挂式
Wall-hanging



RAL7038



RAL7024



RAL9001



RAL1001



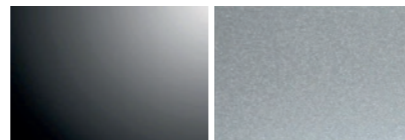
不锈钢

可选材料及颜色
Materials and colors are available



发纹不锈钢
Hairline St./St.

镜面不锈钢
Mirror St./St.



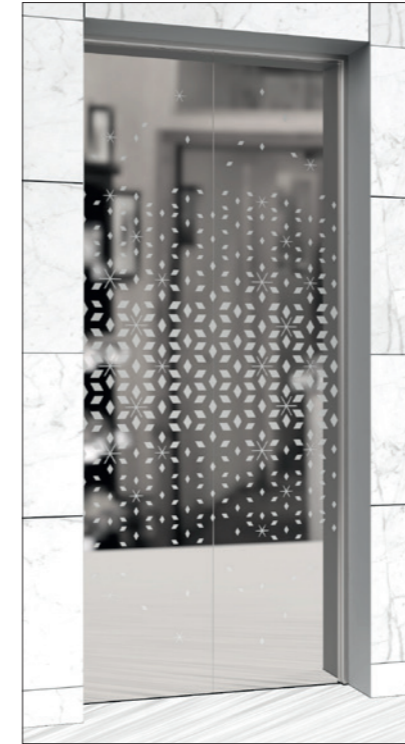
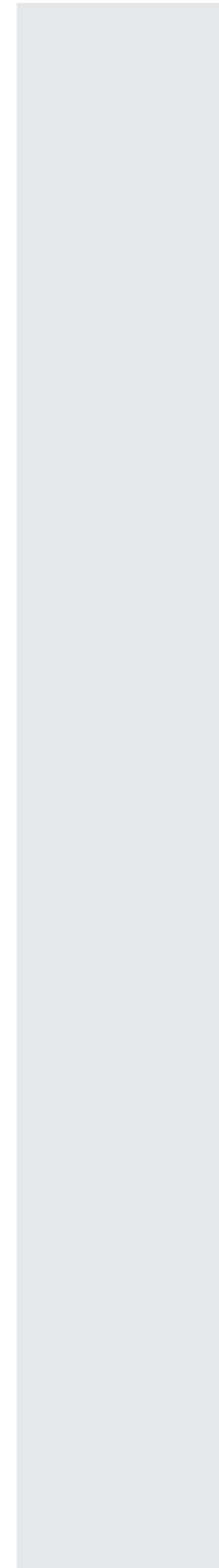
黑钛金色
Black Titanium

磨砂不锈钢
Frosted St./St.

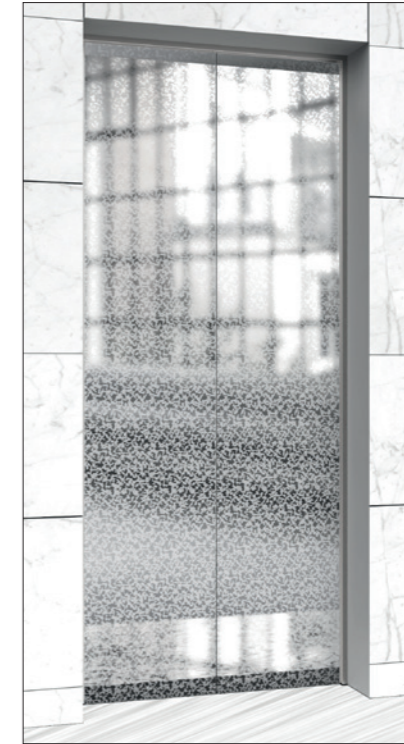


钛金色
Titanium

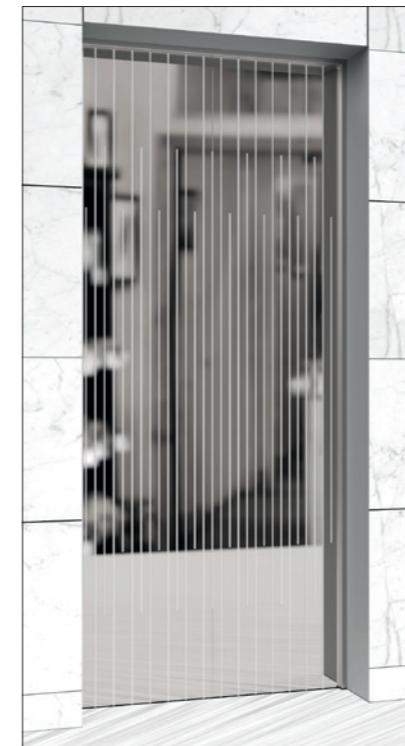
玫瑰金色
Rose gold



TM007



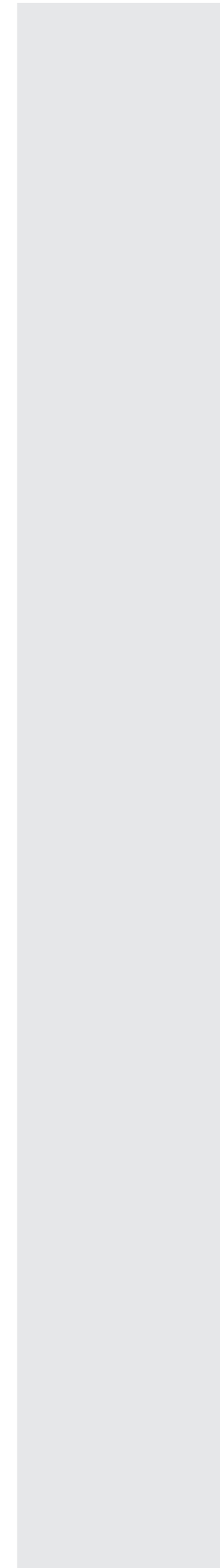
TM008



TM009

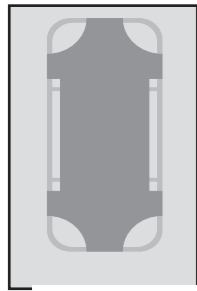


玻璃门



Special space design Suitable for stretchers

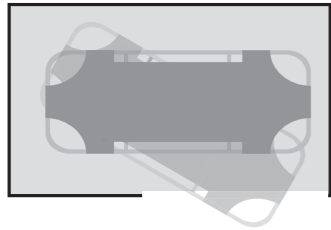
特殊空间设计 更适合担架出入



大深度空间设计

侧对重井道布置，注重轿厢深度设计，深度达2100mm，方便救援担架直接出入。

Deep space design
Side CW shaft well layout, focus on car depth rescue stretcher.



大开门宽度空间设计

后对重井道布置，加宽轿厢设计，宽度达2100mm，加大开门宽度，特别适合救援担架侧面出入。

Wide door opening width design
Rear CW shaft well layout, car was widened to a width of 2100mm, door width was increased, suitable for lateral access of rescue stretcher.

关爱你和他人的安全与健康，巨立与您共同实现社会责任，专为住宅楼及公共场所量身定做了担架电梯，可靠的救援专用系统设计、科学的轿厢空间规划，更加方便在紧急救援时，形成一个无障碍通道快速到达的楼层，保护用户安全。

专用救援系统

直接送达功能：任意楼层启动“救援”功能，电梯将不再接受其他呼梯请求，形成快速专用直达通道，在最短的时间内到达目的楼层，任务完成后系统自动恢复正常使用。

开关门等待功能：专为救援电梯设计的开关门等待系统，紧急救援时，电梯启动开门等待，方便救援，出入安全。

停电应急系统

为完成救援特殊使命，电梯可选配救援专用应急系统，一旦发生停电，应急电源系统启动，电梯就近平层开门，完成救援工作。

国家新版《住宅设计规范》

GB50096-2011住宅设计标准要求“12层及12层以上的住宅，每栋楼设置电梯不应少于两台，其中一台是可容纳急救担架的电梯”的规定。

Concerned with the safety and health of the people, Joylive stretcher elevator complies with the latest International Building Code (IBC). To protect the user's safety, tailor-made stretcher elevators is made with reliable rescue-specific system design, scientific car space planning, and more convenience in emergency.



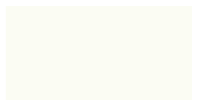
轿厢 G5292 (标配) Standard Cabin



吊顶 G1089 Ceiling



烤漆RAL7038
Painted



烤漆RAL9001
Painted



发纹不锈钢
Hairline St./St.



侧壁/后边壁 Car wall



发纹不锈钢
Hairline St./St.



后中壁 Car wall



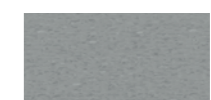
镜面不锈钢
Mirror St./St.



发纹不锈钢
Hairline St./St.



地板 Floor



PVC G3121



PVC G3122



橡胶 G3123



360° 全景

备注：

本手册所展示的轿厢及选项配置仅供参考，所示样品与实物的色彩和材质可能会有偏差，以实物为准。

Note:

The color and material shown in this manual are for reference only. The color and material of these sample might be different from the real object.



轿厢 G5289 (选配) Optional Cabin



吊顶 G1094 Ceiling



烤漆RAL7038 Painted 烤漆RAL9001 Painted



发纹不锈钢 Hairline St./St.



侧壁/后边壁 Car wall



发纹不锈钢 Hairline St./St.



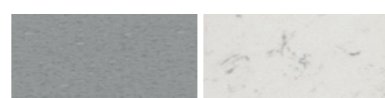
后中壁 Car wall



镜面不锈钢 Mirror St./St. 发纹不锈钢 Hairline St./St.



地板 Floor



PVC G3121 PVC G3122



橡胶 G3123



360° 全景

备注:

本手册所展示的轿厢及选项配置仅供参考, 所示样品与实物的色彩和材质可能会有偏差, 以实物为准。

Note:

The color and material shown in this manual are for reference only. The color and material of these sample might be different from the real object.



轿厢 G5291 (选配) Optional Cabin



吊顶 G1089 Ceiling



烤漆RAL9001 Painted 烤漆RAL7038 Painted



发纹不锈钢 Hairline St./St.



侧壁/后边壁 Car wall



G4445 G4441



G4450 G4446



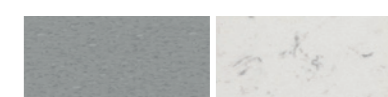
后中壁 Car wall



镜面不锈钢 Mirror St./St.



地板 Floor



PVC G3121 PVC G3122



橡胶 G3123



360° 全景

备注:

本手册所展示的轿厢及选项配置仅供参考, 所示样品与实物的色彩和材质可能会有偏差, 以实物为准。

Note:

The color and material shown in this manual are for reference only. The color and material of these sample might be different from the real object.

DECORATION DESIGN

装潢设计



轿厢 G5287 (选配) Optional Cabin



360° 全景



吊顶 G1094 Ceiling



烤漆RAL9001 烤漆RAL7038
Mirror St./St. Hairline St./St.



发纹不锈钢
Hairline St./St.



侧壁/后边壁 Car wall



G4445 G4441



G4450 G4446



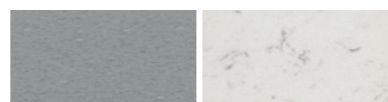
后中壁 Car wall



镜面不锈钢
Mirror St./St.



地板 Floor



PVC G3121 PVC G3122



橡胶 G3123

备注:

本手册所展示的轿厢及选项配置仅供参考, 所示样品与实物的色彩和材质可能会有偏差, 以实物为准。

Note:

The color and material shown in this manual are for reference only. The color and material of these sample might be different from the real object.

APPLICATION RANGE

适用范围

3100(GP30)

小机房

Speed 额定速度 m/s	Max. travel 最大提升高度 m	Max. stop 最大层站数	Suggest stop 建议层站数	Capacity 额定载重 kg
1.0	50	18	≤13	630 800 1000 1150
1.5	75	28	≤20	
1.75	90	32	≤25	

说明: (1). 阴影部分为可提供的范围。
(2). 若用户所需的额定载重系列不在本产品标准载重系列中且小于1150kg时, 需按最接近的大一档额定载重配置。

Description: (1). The shaded section is the provided range.
(2). If the rated load series required by the user is not in the standard load series of this product and is less than 1,150 kg, it must be configured according to the nearest large rated load.

3200(GPN30)

无机房

Speed 额定速度 m/s	Max. travel 最大提升高度 m	Max. stop 最大层站数	Suggest stop 建议层站数	Capacity 额定载重 kg
1.0	40	14	≤11	630 800 1000 1150
1.5	55	20	≤15	
1.75	70	25	≤19	

说明: (1). 阴影部分为可提供的范围。
(2). 若用户所需的额定载重系列不在本产品标准载重系列中且小于1150kg时, 需按最接近的大一档额定载重配置。

Description: (1). The shaded section is the provided range.
(2). If the rated load series required by the user is not in the standard load series of this product and is less than 1,150 kg, it must be configured according to the nearest large rated load.

3600(GP30)

小机房

Speed 额定速度 m/s	Max. travel 最大提升高度 m	Max. stop 最大层站数	Suggest stop 建议层站数	Capacity 额定载重 kg
2.0	100	36	≤28	800 1000 1150 1250 1350
2.5	125	42	≤35	

说明: (1). 阴影部分为可提供的范围。
(2). 若用户所需的额定载重系列不在本产品标准载重系列中且小于1350kg时, 需按最接近的大一档额定载重配置。

Description: (1). The shaded section is the provided range.
(2). If the rated load series required by the user is not in the standard load series of this product and is less than 1,350 kg, it must be configured according to the nearest large rated load.

标配功能

电梯变频驱动	开门时间设定	防捣乱	错误指令取消	强迫停层
门机变频驱动	提前关门	编码器故障保护	轿内层楼方向指示	换站停靠
全集选控制	强迫关门	门锁短接保护	层站层楼方向指示	开门延时
司机操作运行	光幕保护	电机温升保护	应急照明	门服务层设定
检修运行	超载保护	自动返基站	点动运行	下集选控制
最佳曲线自动生成	防打滑保护	锁梯功能	五方通话	运行次数记录
井道自学习	上下限位保护	电动松闸 (3200标配)	警铃	运行时间记录
称重信号补偿	超速保护	直接停靠	消防返回	层楼显示按位设置
免负载电机参数识别	外召按钮粘连识别	运行状态显示	远程关闭	再平层
上电自动开门	平层微调	自动校正轿厢位置	用户设定检查	无线远程监控
自动关门	故障诊断	照明风扇节能功能	分时服务	UCMP功能
本层外召开门	逆向运行保护	轿厢到站钟	夜间保安层	提前开门
重复关门	电机过电流保护	独立运行	司机换向	
重复开门	电机过载保护	满载直行	前后门独立控制	
			VIP贵宾服务	

STANDARD FUNCTION

Elevator Frequency Inverter Drive	Fault Diagnosis	Five Parties Call
Door Machine Frequency Inverter Drive	Inverted Running	Alarm Bell
Collective Selective Control	Motor Overcurrent Protection	Fire Emergency Return
Lift Attendant Control	Power Overcurrent Protection	Remote Shut-off
Inspection Travel	Motor Overload Protection	User Inspection Set
Best Curve Autogeneration	Anti-nuisance Device	Time-sharing
Shaft Learning	Encoder Failure Protection	Security Floor Nighttime
Weight Signal Compensation	Door Lock Short Cut Protection	Attendant Reversal
No Load Motor Parameter Identification	Motor Temperature Rise Protection	Front and Back Door Independent Control
Up Automatic Opening Door Operator	Automatic Return Main Floor	VIP Service
Automatic Closing Door Operator	Elevator Lock	Forced Stop
Landing Call	Electric loose brake (3200 standard)	Exchange Stop
Closing Door Repetition	Direct Stop	Opening Delay
Opening Door Repetition	Running Status Display	Service Floor Set
Door-open Time Set	Car Position Autocorrection	Down-collective Operation
Advance Door Closing	Lighting Fan Energy-saving Function	Mileage Recorder
Nudging Run	Car Passing Chime	Time Recorder
Light Curtain Protection	Independent Running	Level Button Position Set
Overload Protection	Car Full Direct Running	Relevel
Anti-slip Protection	False Call Cancellation	Wireless Remote Monitoring
Up and Down Limit Protection	Car Inside Floor Direction Indicator	UCMP
Overspeed Protection	Landing Door Floor Direction Indicator	Pre-opening
Call Button	Emergency Light	
Level Fine Adjustment	Inching Operation	

特殊功能

停电救援	有线远程监控	并联控制	副操纵箱	流媒体显示屏
IC卡控制	无障碍功能	地震管理	智能召唤服务	
语音报站	群控运行	轿内摄像	上下班高峰服务	

SPECIAL FUNCTION

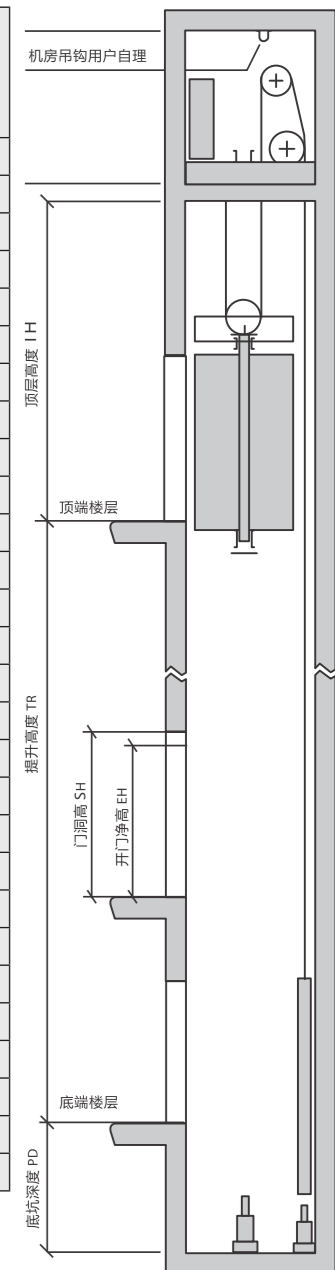
Power Failure Rescue	Group Automatic Operation	Smart Call
IC Card Control	Parallel Control	Traffic Peak
Voice Announcement	Earthquake Protection	Streaming Media Screen
Cable Remote Monitoring	Car Inside Camera	
Physical Disabilities Care	Secondary Operation Box	

LAYOUT PLAN & PARAMETER

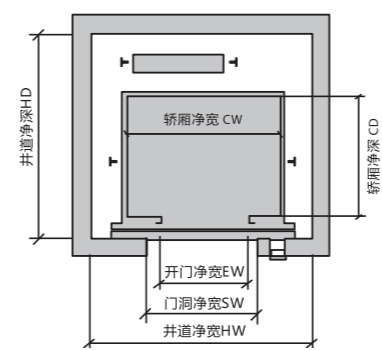
土建布置图 / 参数表

3100 (GP30)

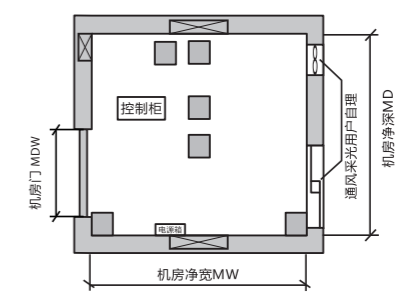
额定载重	额定速度	轿厢尺寸	开门尺寸	对重布置	开门形式	标准井道尺寸	标准底坑净深	标准顶层净高
kg	m/s	CW×CD	EW×EH			HW×HD	PD(mm)	TH(mm)
630	1	1400×1100	800×2100	后对重	中分	1900×1700	1400	4450
	1450						4500	
	1450						4600	
630	1	1100×1400	800×2100	侧对重	中分 (贯通)	2000×1900	1400	4450
	1450						4500	
	1450						4600	
800 (825)	1	1400×1350	800×2100	后对重	中分	1900×1950	1400	4450
	1450						4500	
	1450						4600	
800 (825)	1	1350×1400	800×2100	侧对重	中分 (贯通)	2200×1900	1400	4450
	1450						4500	
	1450						4600	
1000 (1050)	1	1600×1450	900×2100	后对重	中分	2100×2050	1400	4450
	1450						4500	
	1450						4600	
1000 (1050)	1	1400×1600	900×2100	侧对重	中分 (贯通)	2300×2100	1400	4450
	1450						4500	
	1450						4600	
1000 (1050) (担架梯)	1	1100×2100	900×2100	侧对重	旁开	1850×2550	1400	4450
	1450						4500	
	1450						4600	
1000 (1050) (担架梯)	1	1100×2100	900×2100	侧对重	中分	2050×2500	1400	4450
	1450						4500	
	1450						4600	
1150	1	1800×1400	1000×2100	后对重	中分	2300×2100	1400	4450
	1450						4500	
	1450						4600	



井道立面图
Shaft Vertical Section



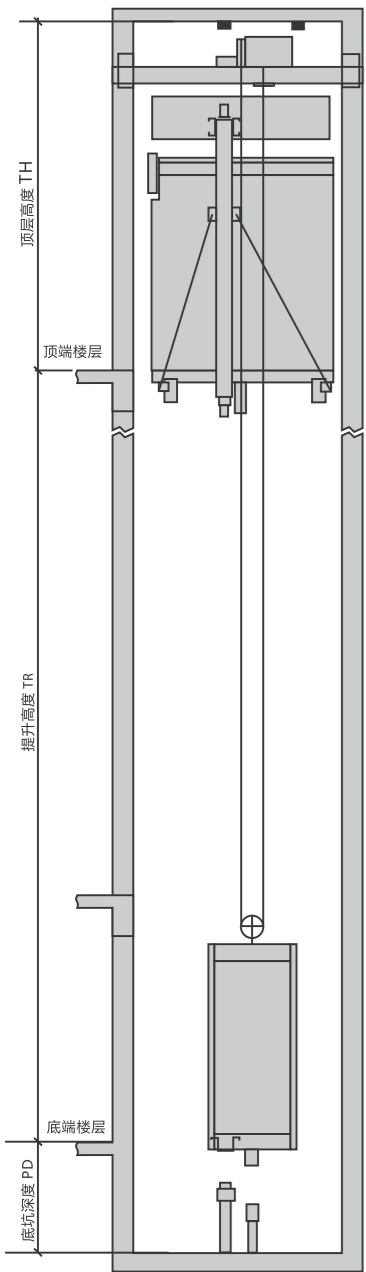
井道平面图
Shaft Plane



机房平面图
Machine Room Plane

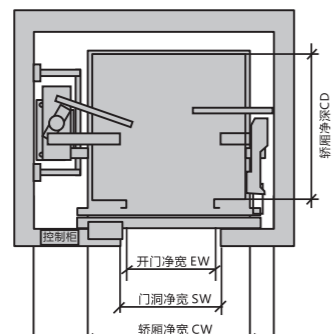
土建布置图 / 参数表

3200 (GPN30)

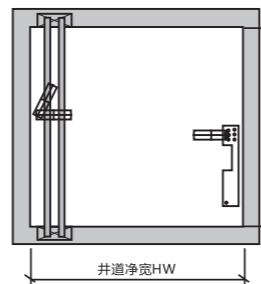


额定载重	额定速度	轿厢尺寸	开门尺寸	对重布置	开门形式	标准井道尺寸	标准底坑净深	标准顶层净高
kg	m/s	CW×CD	EW×EH			HW×HD	PD(mm)	TH(mm)
630	1	1100×1400	700×2100	侧对重	中分	1850×1850	1500	4250
	1.5						1550	4350
	1.75						1600	4400
630	1	1100×1400	700×2100	侧对重	中分(贯通)	1850×1900	1500	4250
	1.5						1550	4350
	1.75						1600	4400
800 (825)	1	1350×1400	800×2100	侧对重	中分	2100×1850	1500	4250
	1.5						1550	4350
	1.75						1600	4400
800 (825)	1	1350×1400	800×2100	侧对重	中分(贯通)	2100×1900	1500	4250
	1.5						1550	4350
	1.75						1600	4400
1000 (1050)	1	1600×1450	900×2100	侧对重	中分	2350×1900	1500	4250
	1.5						1550	4350
	1.75						1600	4400
1000 (1050)	1	1400×1600	900×2100	侧对重	中分(贯通)	2250×2100	1500	4250
	1.5						1550	4350
	1.75						1600	4400
1000 (1050) (担架梯)	1	1100×2100	900×2100	侧对重	旁开	1850×2550	1500	4350
	1.5						1550	4450
	1.75						1600	4500
1000 (1050) (担架梯)	1	1100×2100	900×2100	侧对重	中分	2100×2500	1500	4350
	1.5						1550	4450
	1.75						1600	4500
1150	1	1800×1400	1100×2100	侧对重	中分	2700×1800	1500	4350
	1.5						1550	4450
	1.75						1600	4500

井道立面图
Shaft Vertical Section



井道平面图
Shaft Plane

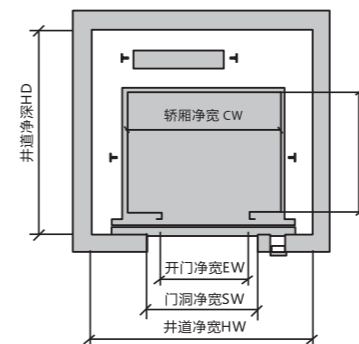
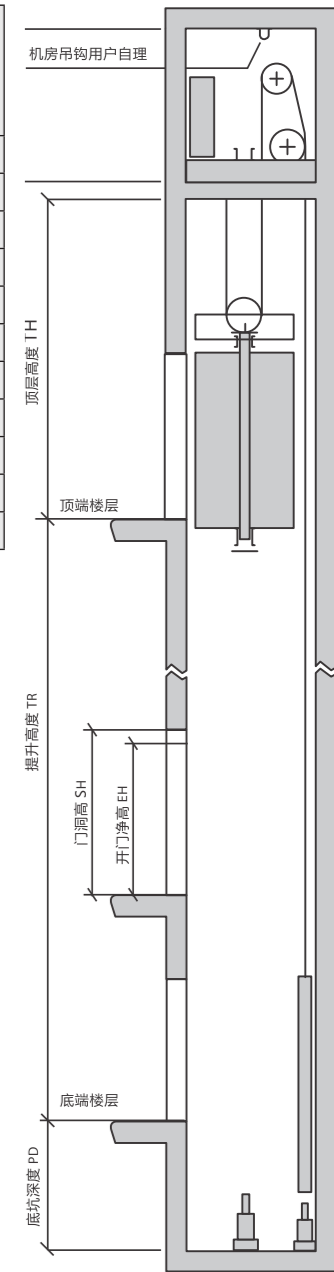


顶层平面图
Top Floor Plane

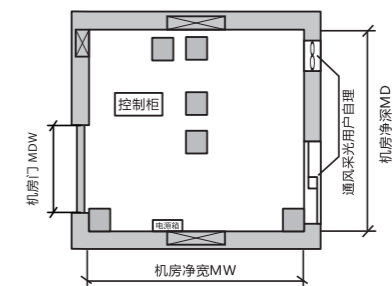
土建布置图 / 参数表

3600 (GP30)

额定载重	额定速度	轿厢尺寸	开门尺寸	开门数量	开门形式	标准井道尺寸	标准底坑净深	标准顶层净高
kg	m/s	CW×CD	EW×EH			HW×HD	PD(mm)	TH(mm)
800 (825)	2	1400×1350	800×2100	单开门	中分	2000×2150	2000	5000
	2.5						2100	5100
	2						2000	5000
1000 (1050)	2	1600×1450	900×2100	单开门	中分	2200×2200	2000	5000
	2.5						2100	5100
	2						2000	5000
1150	2	1800×1400	1000×2100	单开门	中分	2400×2200	2000	5000
	2.5						2100	5100
	2						2000	5000
1250	2	1900×1500	1100×2100	单开门	中分	2500×2300	2000	5000
	2.5						2100	5100
	2						2000	5000
1350	2	1900×1600	1100×2100	单开门	中分	2500×2400	2000	5000
	2.5						2100	5100
	2						2000	5000



井道平面图
Shaft Plane



机房平面图
Machine Room Plane

井道立面图
Shaft Vertical Section