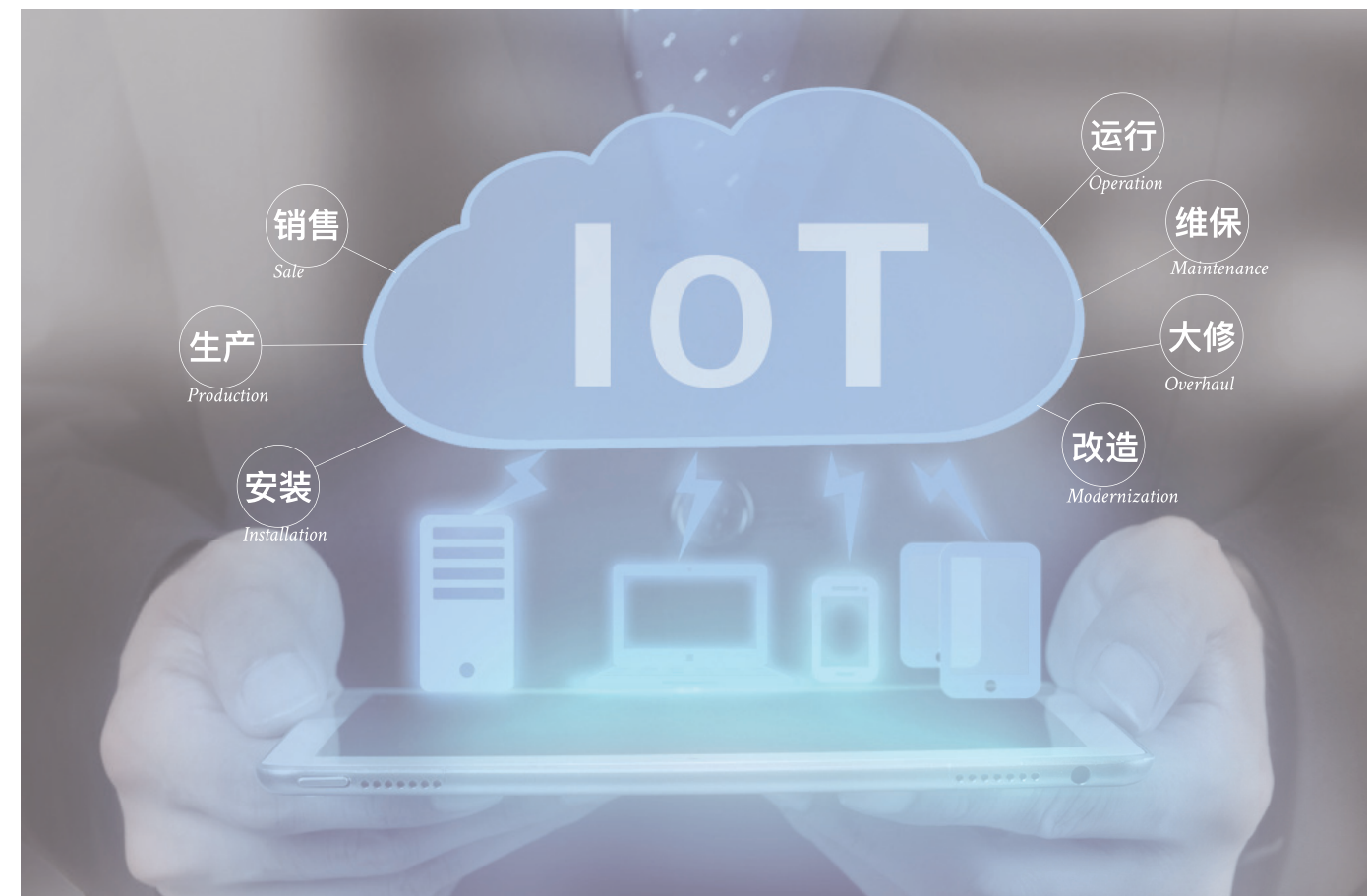


Intelligent Service

智能服务

当电梯邂逅物联网，巨立云 4.0，实现从被动服务到主动服务的颠覆性创新

Elevator management achieves subversive innovation from passive to active service when access to JoyCloud™ 4.0 IoT platform.



巨立云电梯物联网平台 Joycloud™ Elevator IoT Platform

巨立云电梯物联网平台，是一款具有完全自主知识产权的智能化电梯管理平台，可为整梯制造企业、政府监管部门、安装维保组织、物业管理单位、分销代理机构，以及最终乘梯用户，提供电梯过程管理和智能服务，全面覆盖电梯销售、生产、安装、运行、维保、大修以及改造等电梯全生命周期。将分布在全国数以万计的电梯汇集在共享平台上，对电梯运行过程中的关键数据进行实时采集、统计和分析。实现电梯行业从被动服务到主动服务模式的

颠覆性创新，让电梯变得更安全，让管理变得更简单。
Joycloud™ Elevator IoT platform, developed by Joylive Elevator, it is based on cloud computing and Internet of Things technology, is an intelligent elevator management platform with completely independent intellectual property rights. It can provide elevator process management and intelligent services for full elevator manufacturing enterprise, government regulatory

department, install maintenance companies, property management units, distribution agencies, and passengers, covering elevator sales, production, installation, operation, maintenance, overhaul and renovation. Through application of wireless data transmission technologies, tens of thousands of elevators around the globe are brought together on a shared platform to collect, count and analyze key data in elevator operation process in real time.



Joycity

为大型建筑垂直客流提供规划设计制造安装及运行监控服务，适用于医院/保健院/疗养护理中心/急救检验中心及其他医疗机构。

Provide planning, design, manufacturing, installation and operation monitoring services for vertical passenger flow in large buildings. suitable for hospitals/health care centers/emergency inspection centers and other medical institutions.

巨立 Joylive

JOYCITY

医用电梯

全生命周期管理服务方案

Lifecycle management service plan for Hospital Elevator

B310 / BN320

巨立 Joylive

巨立股份 伴你美好生活
JOYLIVE - Your friend of wonderful life

巨立电梯股份有限公司 (证券简称: 巨立股份 证券代码: 833481) Joylive Elevator Co., Ltd.

总部: 江苏省昆山市正仪君子亭西路615号 | 智能工厂: 江苏省昆山市石牌毛许路322号 | www.joylive.com
电话: 0512-57806555 | 传真: 0512-57899222 | 全国24小时服务热线: 400 884 8881 | 电子邮箱: joylive@joylive.com
A: No. 615, West Junziting Rd., Kunshan Suzhou City, China T: +86-512-57806555 | M: joylive.lif@gmail.com sales@joylive.com

本印刷品仅作为一般信息之用。本公司保留随时更改产品设计及规格的权利。本印刷品所载信息就产品及其特殊用途之适用性、适用性、品质均不构成任何明示或暗示的担保或承诺。亦不得视作其中产品或服务采购协议的条款。内容仅供参考。如有变动，以最新技术文件为准。恕不另行通知。印刷颜色与实际色彩可能略有差别，以实物为准。

版权所有 201808



请至官网或者官方微信获取更详细资料

用心智造 技术保障

开门限制装置 Anti-Push Door Protection Device

有效限制轿门的开启，避免轿厢内人员强行扒门导致的意外伤害。

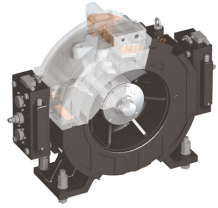
Effectively limit the opening of car door, avoiding accidental injury caused by forced door opening in car.



制动力自监测 Traction Motor Brake Force Self-Test

定时检测主机制动能力，验证其可靠性，完全避免抱闸失效而导致的电梯安全问题，实现了电梯健康安全自诊断。

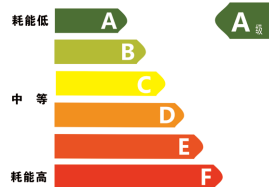
It regularly detects brake force of traction motor brake to verifies its reliability, completely avoids safety problems caused by brake failure, to discover unhealth status of elevator in advance.



通过ISO25745最高A级节能认证 ISO25745 Class-A Highest Energy Certificate

待机功耗低于50W，呼梯响应迅速，减少50%的待机能耗。

Standby power consumption is less than 50W, with fast call response, reducing standby power consumption by 50%.



模块化组装 Max. Modular Assembly Before Delivery

产品实现了最大化模块化组装出厂，能够在工厂内完成的工作全部在厂内工作平台上完成，严格质量检验后出厂，极大的提高现场安装质量与效率。

Elevator components are maximally modularized and assembled in factory with strict quality inspection, which greatly improves installation quality and shorten installation time at job site.



静音设计 Mute Design for Key Components

电梯启制动时，接触器仅发出微小的吸合声，同时采用静音抱闸设计，有效降低机房噪音。

Contacter only emits tiny suction sound by using mute design when elevator starts/stops, it also adopts silent design brake to effectively reduce noise in machine room at the same time.



卓越的减震系统 Excellent Car Damping System

减震效果可提高约30%以上，有阻尼与无阻尼减震系统的完美结合，使乘客尊享舒适的乘梯感受。

Reinforced car bottom, car top wheel damping system, damping effect can be increased by more than 30%, with a perfect combination of damping and non-damping system, passengers can enjoy a comfortable ride experience.



轿厢设计



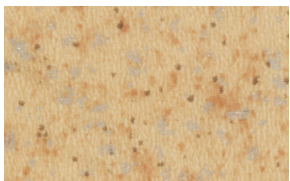
吊顶 (G1010) : 发纹不锈钢、白色有机透光板
Ceiling (G1010): Hairline St./St., White transparent acrylic plate
扶手 (G6001) : 不锈钢圆扶手
Handrail (G6001) : Stainless steel circular armrest
主操纵箱 (G2143) : 发纹不锈钢
Main COP (G2143): Hairline St./St.,
副操纵箱 (G2120) : 发纹不锈钢
Aux. COP (G2120): Hairline St./St.,
轿壁 : 发纹不锈钢、后壁半高文明镜
Car wall : Hairline St./St., Safety laminated glass
地板 (G3109) : 塑胶PVC
Floor (G3109) : PVC



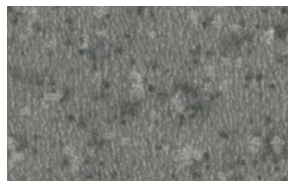
吊顶 (G1017) : 发纹不锈钢、白色有机透光板
Ceiling (G1017): Hairline St./St., White transparent acrylic plate
扶手 (G6003) : 发纹扁扶手
Handrail (G6003) : Hairline St./St., flat
主操纵箱 (G2143) : 发纹不锈钢
Main COP (G2143): Hairline St./St.
副操纵箱 (G2120) : 发纹不锈钢
Aux. COP (G2120): Hairline St./St.
轿壁 : 后壁中间为镜面不锈钢
后壁两侧及侧壁两侧为发纹不锈钢
Car wall: Mirror St./St. and Hairline St./St.
地板 (G3111) : 塑胶PVC
Floor (G3111) : PVC

装潢选项 Decoration

地板 Floor



G3108 土黄色 PVC
Taupe PVC



G3110 银灰色 PVC
Silver PVC



G3109 浅灰色 PVC
Light grey PVC

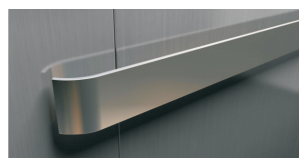


G3111 蓝色 PVC
Blue PVC

扶手 Handrail

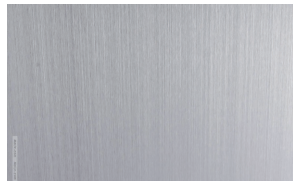


G6001 不锈钢圆扶手
Circular type St./St.



G6003 不锈钢扁扶手
Flat type St./St.

轿壁 Cars wall



G4201 发纹不锈钢
Hairline St.St.

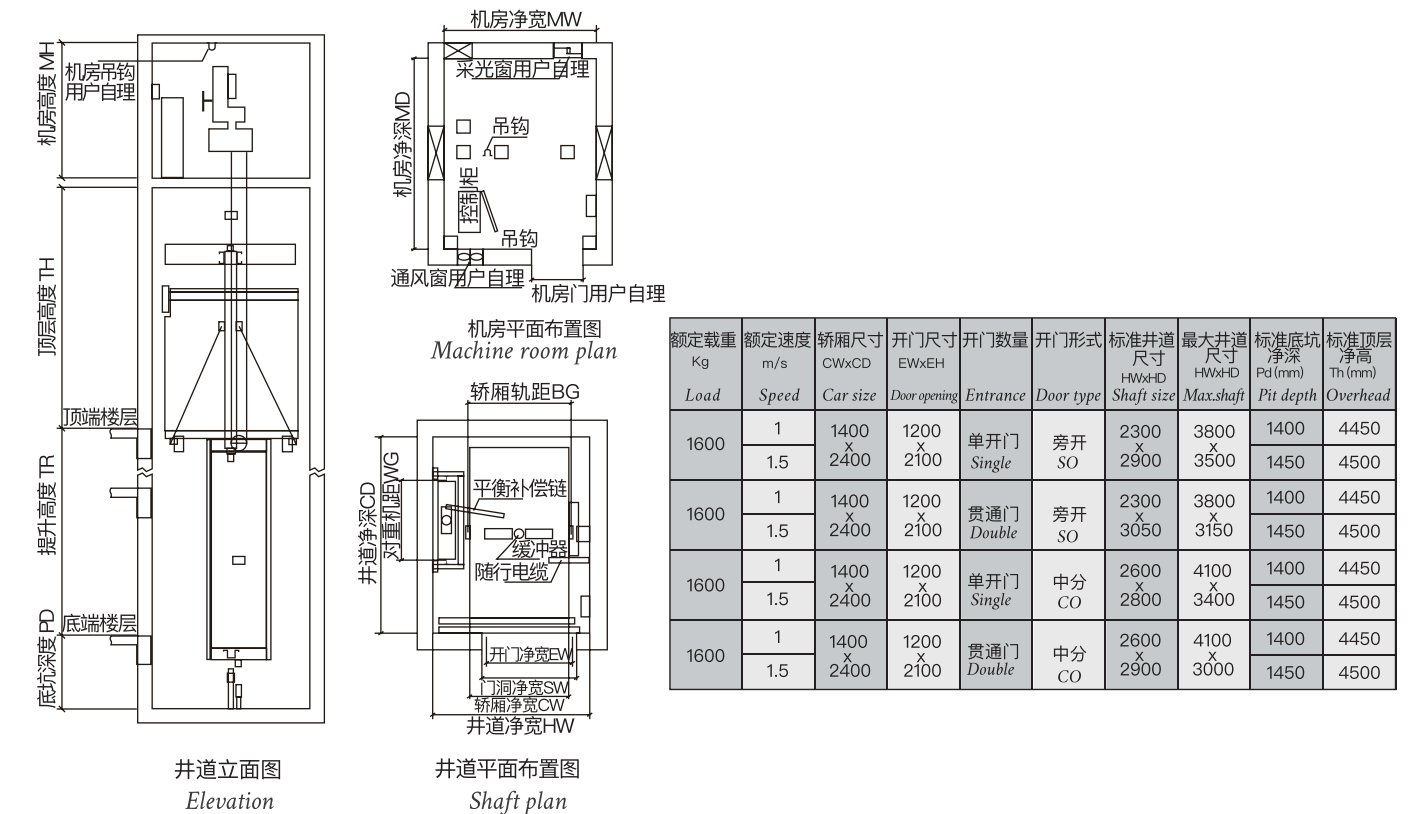


G4203 镜面不锈钢
Mirror St.St.

土建布置及参数表

B310

MR (Machine RoomUp)



BN320

MRL (Machine Roomless)

