

智联城市，布局全球战略

Global strategy

产品和服务网络覆盖
东南亚、中东、非洲等国家和地区

50+



JOYVILLA

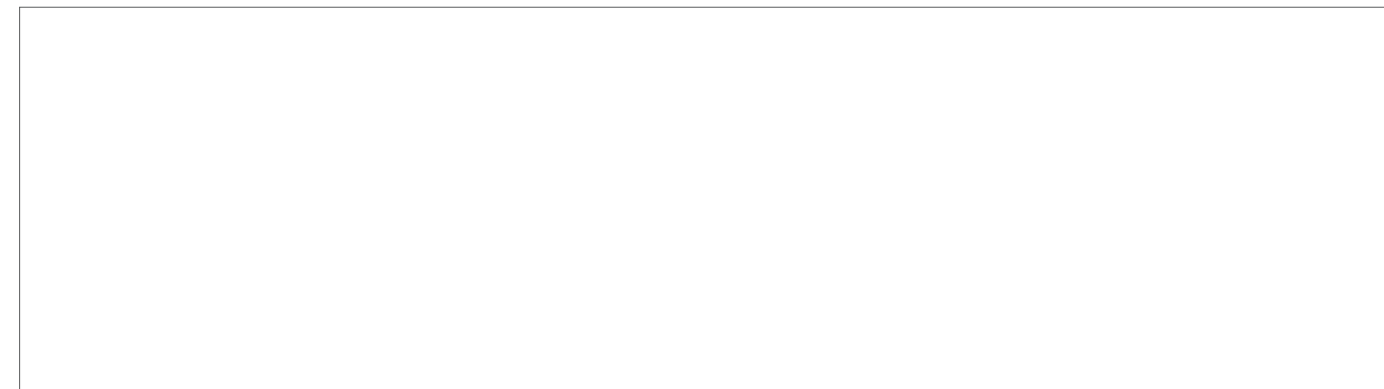
智能家用电梯

源自意大利Gearless技术

Intelligent Home Lift

Gearless Technology From Italy

6600/6300



巨立电梯
微信公众号



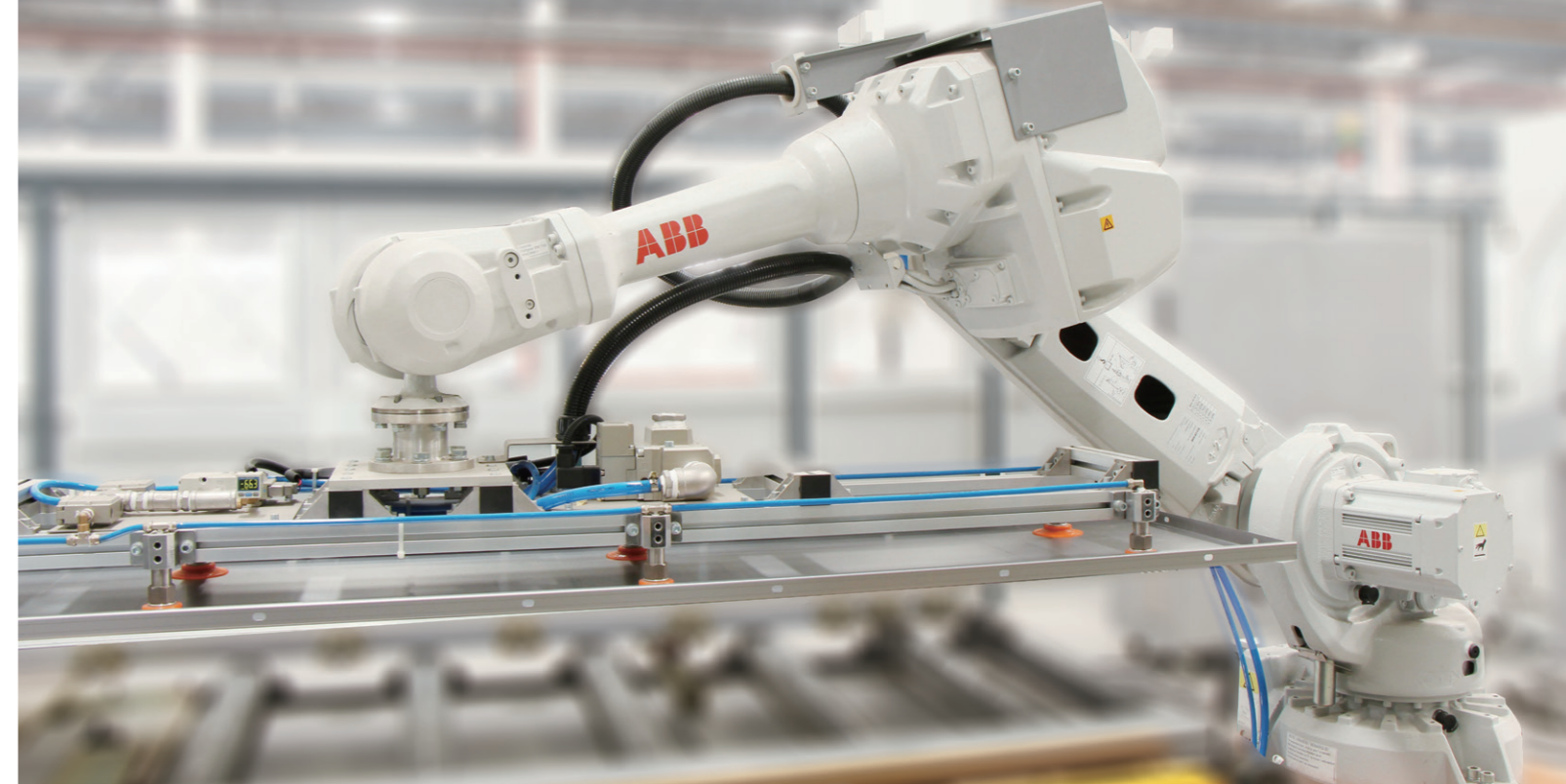
巨立家用电梯
微信公众号

TWO-WHEEL DRIVE INNOVATIVE BRAND STRATEGY

双轮驱动 创新品牌战略

在“国家品牌计划”的大背景下，巨立股份通过融合国际先进的信息技术、制造技术、自动化技术和人工智能技术，确定了智能制造和智能服务两大发展战略，走上品牌建设发展的道路。

Under the background of the 'National Brand Plan', Joylive has identified two major development strategies: intelligent manufacturing and intelligent serve and embarked on the road of brand building development through the integration of international leading information technology, advanced manufacturing technology, automation technology and artificial intelligence technology.



ABOUT JOYLIVE 关于巨立

巨立电梯股份有限公司 2002 年创立于江苏昆山，公司专注于电梯制造与服务领域，拥有行业先进的智能制造中心，产品包括乘客电梯、家用电梯、载货电梯、自动扶梯及自动人行道等全系列的电扶梯产品解决方案。巨立股份坚持品质和技术创新，先后获得了“高新技术企业”、“江苏省认定企业技术中心”、“江苏名牌产品”、“江苏省电梯维保五星单位”等称号，与苏州大学共建了“苏州大学——巨立股份智能技术研究所”，并与新加坡科技研发局、新加坡建屋发展局展开技术合作，研发全球新一代电梯物联网技术。

Joylive Elevator Co., Ltd. was founded in Kunshan, Jiangsu Province in 2002. The company, equipped with an industry intelligent manufacturing center specializes in elevator manufacturing and service. The products include Passenger Elevator, Home Elevator, Freight Elevator, Escalator and Moving Walks with complete series of product solutions. Joylive adheres to the quality and technology innovation, and continuously win the titles of 'High-tech Enterprise', 'Enterprise Technology Center Recognized by Jiangsu Province', 'Jiangsu Famous Brand Products' and 'Jiangsu Province Five-Star Elevator Maintenance Company'. The company established 'Intelligent Technology Research Institution' with Soochow University, and cooperated with the Singapore Science and Technology Research Bureau & the Housing Development Bureau of Singapore and Information to research the world's new generation of Elevator IoT technology.

HOME ELEVATOR FOR GLOBAL VILLA CUSTOMERS

面向全球别墅客户的 家用电梯

Joylive 6600/6300 着眼于空间居者的生活追求

我们透过材质与颜色，将家用电梯与居者生活有机的结合，造就自然与安全的垂直空间。安全、静音、耐用、美观是 Joylive 6600/6300 产品设计的核心宗旨，精雕细琢、匠心独运；智能管家、安全可靠；设计雅致、工艺精美，为全球别墅客户提供垂直建筑交通解决方案。

Joylive 6600/6300 focuses on the pursuit of life in space. We organically combine home elevators with people's life through materials and colors, creating a vertical space of nature and safety. To be Safe, quiet, durable and beautiful is the core tenet of Joylive 6600/6300 product design. It is meticulously crafted and ingenious; intelligent butler, safe and reliable; elegant design and exquisite craftsmanship, Joylive can provide the best vertical transportation solutions for villa clients from all over the world.

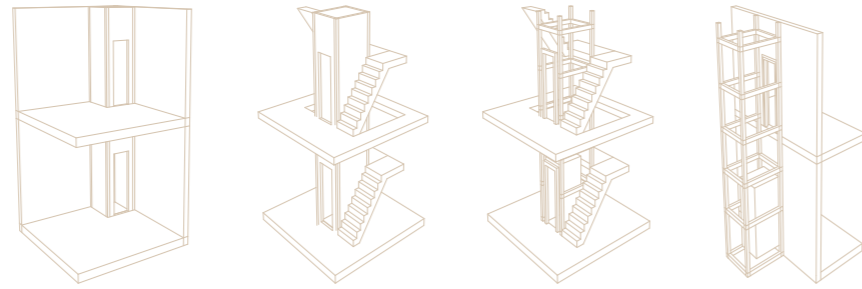


优乐生活

自由的土建布置 Free layout of construction

井道位置自由设置，提供多种井道布置方式，最大程度降低了土建成本，提升了建筑设计的自由度，适合各类家居环境。

Free setting of shaft structure, offers a variety of shaft layout, to minimize the cost of civil construction and improve architectural design freedom and fit any house environment type.



多样化的结构方式 Various type of structure

6600龙门架结构运行平稳舒适。

Gantry structure running smoothly and comfortably.

6300背包架结构可三面开门，实现别墅多功能、多方位空间自由穿梭。

Backpack design structure can be opened on three sides to realize multifunctionality of the villa Multi-dimensional free space shuttle.



6600

6300

Shaft Decoration Scheme

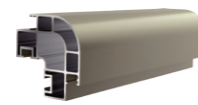
井道装饰方案

高强度铝合金，承载无限

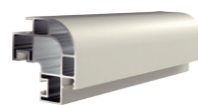
High-strength aluminum alloy, carrying unlimited



可选型材颜色 Optional material color



氟碳 - 香槟金
Fluorocarbon process
- champagne gold

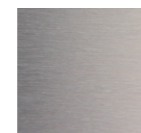


烤漆 - 白色
Paint - white



转印 - 木纹
Transfer paint
- wood grain

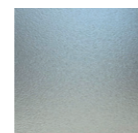
可选封板材质* Optional sealing material



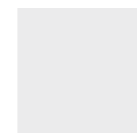
铝塑板
Aluminum composite panel



茶色玻璃
Brown glass



磨砂玻璃
Frosted glass



透明玻璃
Transparent glass

* 井道封板可选 8mm 单层钢化玻璃, 4+4 夹胶钢化玻璃, 铝塑板

安全、静音、节能系统

驱动马达 Drive motor

源自意大利 Gearless技术
永磁同步无齿轮曳引机，安全可靠，绿色环保，平稳舒适，节省空间，盘式抱闸，主机过热保护，额定功率仅1.1kW。
静音 | 抗干扰 | 能耗低 | 主机制造序列号可追溯。

Italy Gearless Technology,
The permanent magnet synchronous gearless traction is safe and reliable, green and environmental protection, steady and comfortable, saving space, disc brake, motor overheat protection, rated power is only 1.1kW.
Mute | Anti-interference | Low energy consumption | Motor manufacturing serial number traceable.



BK50 迷你静音型控制系统 BK50 Mini mute control system

迷你家居化电梯控制柜：320x200x600mm(长x宽x高)；
220V家庭用电，待机功率小于50W。
OMRON无声继电器替代接触器，运行过程中无接触器噪音。

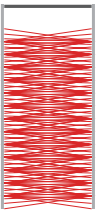
Mini home elevator control cabinet: 320 X 200 X 600mm (L x W x H);
220V home power supply, standby power is less than 50W.
OMRON The silent relay replaces the contactor and there is no contactor noise during operation.



光幕系统 Light curtain system

标配154束红外扫描光束，保护高度1800mm，交叉式扫描，全方位“手指”级保护。

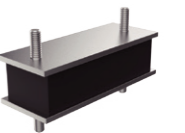
It is equipped with infrared scanning up to 154 beams, protection height 1800mm, cross-scan available, all-round "finger" level protection.



减震降噪系统 Shock absorption and noise reduction system

采用多重减震措施，减弱震动传导，配置隔音、降噪措施，增强乘坐舒适度，提高用户体验。

Various shock absorption measures to reduce the vibration conduction. It also configure sound insulation, noise reduction measures to enhance ride comfort and the user experience.



巨立云智能电梯管家 Joycloud intelligent elevator butler

- 动态监测 以网为尺，提前预警
- 远程监控 以网为眼，实时监控
- 在线安装 以网为规，节点控制
- 在线维保 以网为笈，维保管理
- 网格救援 以网为箭，响应及时
- 体验互动 以网为介，交互传动

- Dynamic Monitoring
- Remote Monitoring
- On-line installation
- On-line Maintenance
- Grid Rescue
- Interactive Experience



安全、完善的电梯保护措施 Safe and complete elevator protection measures

配有高于国标要求的机械结构、智能电气、故障自平层、ARD停电紧急救援装置等各类保护措施，配合Joycloud智能电梯管家系统给予用户整套完善的安全保护体系。

Equipped with mechanical structure protection measures that exceeds national standard requirements, intelligent electrical protection measures, fault self-leveling, ARD power failure emergency rescue device, etc., in coordination with Joycloud 4.0 intelligent elevator butler system, it gives user a complete set of security protection system.



定制您的品质生活



G5201 标配基础款



G5276 标配基础款



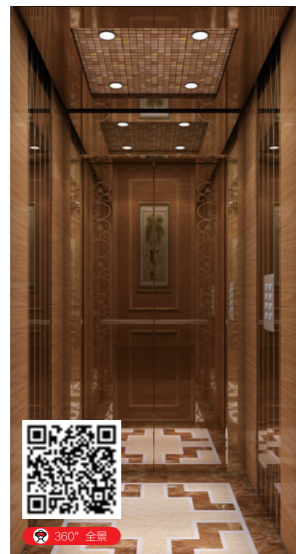
G5277 选配现代款



G5143 选配现代款



G5238 选配轻奢款



G5199 选配轻奢款



G2147B

标配: 磨砂不锈钢
选配: 镜面不锈钢
Standard: Frosted stainless steel
Optional: Mirror Stainless steel

G2240

超薄壁挂式外呼，标配发纹不锈钢，可选玫瑰金镜面不锈钢、香槟金镜面不锈钢。
Ultra-thin wall-mounted HOP, rose golden mirror stainless steel, champagne golden mirror stainless steel are available.

* 需配置家庭电话线接入。

功能选项

电梯变频驱动
门机变频驱动
检修运行
最佳曲线自动生成
井道自学习
免负载电机参数识别
上电自动开门
自动关门
本层外召开门
开门时间设定
强迫关门
光幕保护
CPU故障保护
防打滑保护
上下限位保护
超速保护
平层微调
故障诊断
逆向运行保护
电机过电流保护
电源过电压保护
电机过载保护

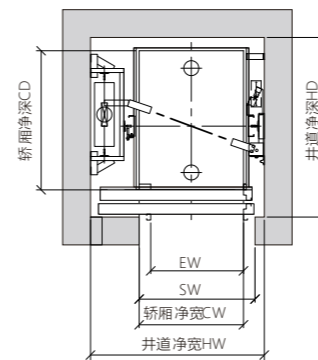
Elevator Frequency Inverter Drive
Door Machine Frequency Inverter Drive
Inspection Travel
Best Curve Autogeneration
Shaft Learning
No Load Motor Parameter Identification
Up Automatic Opening Door Operator
Automatic Closing Door Operator
Landing Call
Door-open Time Set
Nudging Run
Light Curtain Protection
CPU Fault Protection
Anti-slip Protection
Up and Down Limit Protection
Overspeed Protection
Level Fine Adjustment
Fault Diagnosis
Inverted Running
Motor Overcurrent Protection
Power Overcurrent Protection
Motor Overload Protection

自动返基站
锁梯功能
自救平层运行
自动校正轿厢位置
电梯待机节能功能
超载保护
应急照明
紧急通话
警铃
运行次数记录
运行时间记录
停电ARD自动救援
防捣乱
编码器故障保护
门锁短接保护
电机温升保护
IC卡控制 (可选)
语音报站 (可选)
无线远程监控 (可选)
轿厢摄像 (可选)
真彩图片机显示 (可选)

Anti- nuisance Device
Encoder Failure Protection
Door Lock Short Cut Protection
Motor Temperature Rise Protection
Automatic Return Main Floor
Elevator Lock
Self rescue level running
Car Position Autocorrection
Lighting Fan Energy-saving Function
Overload holding stop
Emergency Light
Five Parties Call
Alarm Bell
Mileage Recorder
Time Recorder
ARD power failure rescue
IC Card Control (Optional)
Voice Announcement (Optional)
Wireless Remote Monitoring (Optional)
Car Inside Camera (Optional)
TFT Display (Optional)

Layout plan & Parameter table

土建布置图/土建参数表



6600 斜跨式龙门架

Load 额定载重 kg	Speed 额定速度 m/s	Door opening 开门 形式	Door width 开门 宽度	最小轿厢尺寸 (mm)		最小井道净尺寸 (mm)	
				宽CW	深CD	宽HW	深HD
320/400	0.4	旁开 SO	700	800	1000	CW+650	CD+350
			800	900			
320/400	0.4	中分 CO	700	900/950 1000/1050	1000	CW+650	CD+300
			800	1100/1150 1200			
320/400	0.3	手拉 Manual	700	800	1000	CW+650	CD+150
			800	900			

反绳轮上置式 Diversion sheave upwards		
轿厢高度 CH	底坑净深 PD	顶层高度 TH
2050	300	3100
2150		3200
2250		3300
2350		3400
反绳轮下置式 Diversion sheave downwards		
轿厢高度 CH	底坑净深 PD	顶层高度 TH
2050	500	2900
2150		3000
2250		3100
2350		3200

说明：该表格数据为允许的极限范围，公司标准范围为轿厢宽度CW=800~1200，轿厢深度CD=1000~1300，CW、CD不可同时选用最小或最大值，表内顶层净高对应轿厢高度为2150，轿厢高度可选范围为：2050~2350。超出此范围请走非标流程。
Note: The above table data is the max. allowable range. Standard range is car width CW=800~1200, car depth CD=1000~1300, CW, CD can not select the minimum or maximum value at the same time, car height is 2150 correspond to the top level height for above table and car height can be selected from 2050 to 2350. Please go through non-standard process if beyond this range.

6300 后背包

Product series 产品系列	Load 额定载重 kg	Speed 额定速度 m/s	Door opening 开门 形式	Door width 开门 宽度	Min. car dimension 最小轿厢尺寸 (mm)		Min. shaft dimension 最小井道净尺寸 (mm)		Pit depth 底坑净深 PD(mm)	Overhead 顶层净高 TH(mm)	Note 备注
					宽CW	深CD	宽HW	深HD			
6300 对重后置 CW rear	320/400	0.4	旁开 SO	700	1100	700	CW+300	CD+750	300	3300	
				800	1250	700	CD+750				
6300 对重后置 CW rear	320/400	0.4	中分 CO	700	1100	700	CW+500	CD+700	300	3300	居中中分
				800	1250	700	CW+550	CD+700			
6300 对重后置 CW rear	320/400	0.3	手拉 Manual	700	850	700	CW+250	CD+550	300	3300	
				800	900	700	CW+250	CD+550			

说明：轿厢宽度850~1250，轿厢深度700~1000；CW、CD不可同时选用最小或最大值，表内顶层净高对应轿厢高度为2150，轿厢高度可选范围为：2050~2350。超出此范围请走非标流程。

Note: Car width 850 ~ 1250, car depth 700 ~ 1000; CW, CD can not choose the minimum or maximum value at the same time, car height is 2150 correspond to the top level height for above table and car height can be selected from 2050 to 2350. Please go through non-standard process if beyond this range.